

**Easy to use wireless network management for small and medium networks**

The NETGEAR ProSafe 16-AP Wireless Management System is an easy to use appliance to simplify the set up and management of wireless networks. Supporting up to 16 access points, the WMS5316 Wireless Management System provides a single location to configure and manage the entire wireless network. Designed for growing companies who don't want the complexity and cost of full wireless controllers, the WMS5316 Wireless Management System delivers centralized management, load balancing, RF management, and guest access via an intuitive interface. Priced far below a full wireless controller, the WMS5316 Wireless Management System provides significant time savings and simplifies the deployment and management of a wireless network.

Deployment

Mimicking the set up process of a single access point, the easy to use WMS5316 Wireless Management System enables even novice users to adopt a centralized management architecture for up to 16 access points. With automatic discovery of all supported access points in the network, the WMS5316 Wireless Management System speeds the configuration of a the wireless network. Automatic Radio Frequency (RF) management and channel selection takes care of optimizing the access points in the network for maximum connectivity, without intervention from the network administrator. A single entry of wireless parameters and security settings can then be pushed out to all of the access points, enabling a fully functional wireless network in minutes.

Management

The WMS5316 Wireless Management System monitors the wireless network to ensure optimal performance and respond to changes in the RF environment. It will automatically re-assign channels and adjust RF parameters for maximum connectivity. If enabled, load-balancing on ProSafe Access Points can ensure that no single access point is overloaded continuously, by diverting clients to nearby access points. By actively managing the wireless network, the WMS5316 Wireless Management System provides an improved wireless experience without any IT staff having to lift a finger.

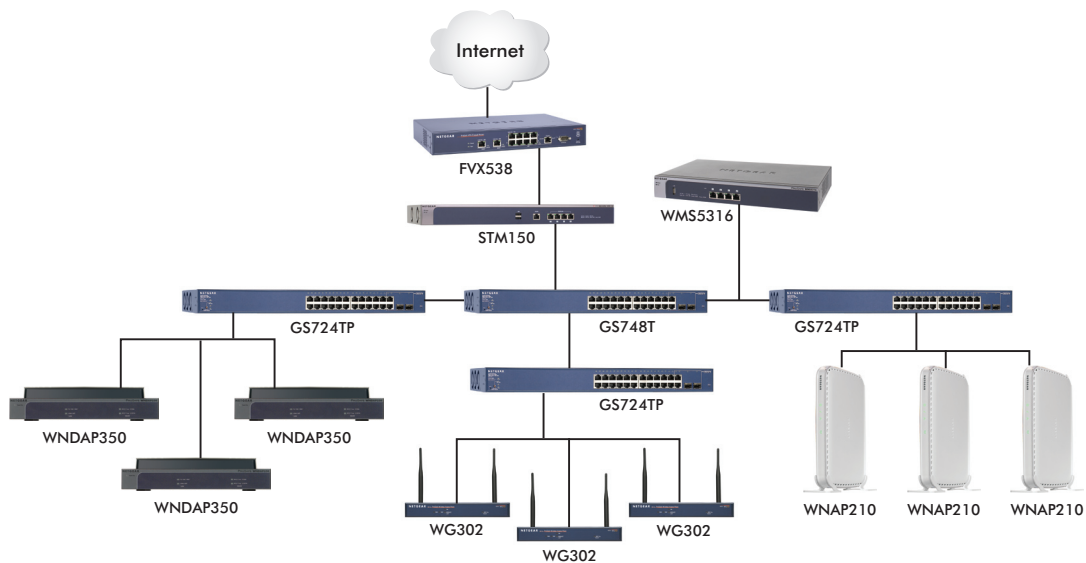
Security

By centrally configuring all access points in the network, the WMS5316 Wireless Management System ensures identical security settings throughout the coverage area so that clients, guests and unwanted intruders all get appropriate access or denial to network resources. Setting up WPA2 encryption keys to keep traffic safe from prying eyes and MAC authentication lists to only allow approved devices on the wireless network can be done once and sent out to the entire network. When used with ProSafe Access Points, the WMS5316 Wireless Management System can configure a guest SSID to allow visitors safe access to the Internet without allowing visibility to company files or resources. Additionally, 802.1x network authentication can be applied for further verification of clients' rights to be on the network. Rogue AP detection will find all access points in the area, enabling administrators to take appropriate actions. The WMS5316 Wireless Management System with central management simplifies the process of deploying a secured wireless network.

Access Points

Supporting a wide portfolio of standard NETGEAR access points, the WMS5316 Wireless Management System enables customers to select the right access points for their needs, even mixing models to provide the right coverage, as well as an upgrade path as technology changes. The access points retain their standalone capabilities and do not require a conversion to be managed by the WMS5316 Wireless Management System. Supported models include SOHO-class 802.11G access points as well as professional caliber dual band 802.11N access points.





Technical Specifications

- **Performance and Capacity**

- Managed access points: 16

- **Access Points Supported**

- WNDAP350 ProSafe Dual Band Wireless-N Access Point
- WNDAP330 ProSafe 802.11n Dual Band Wireless Access Point
- WNAP210 ProSafe Wireless-N Access Point
- WG302v2 ProSafe Wireless Access Point 802.11g
- WG103 ProSafe 802.11g Wireless Access Point
- WN802Tv2 Wireless-N Access Point
- WG602v4 54 Mbps Wireless Access Point

- **System Requirements**

- Laptop or desktop running Microsoft Windows operating system

NETGEAR®

350 E. Plumeria Drive
San Jose, CA 95134-1911
1-888-NETGEAR (638-4327)
E-mail: info@NETGEAR.com
www.NETGEAR.com

© 2010 NETGEAR, Inc. NETGEAR, the NETGEAR Logo, NETGEAR Digital Entertainer Logo, Connect with Innovation, FrontView, IntelliFi, PowerShift, ProSafe, ProSecure, RAIDar, RAIDiator, RangeMax, ReadyNAS, Smart Wizard, X-RAID, and X-RAID2, are trademarks and/or registered trademarks of NETGEAR, Inc. and/or subsidiaries in the United States and/or other countries. Mac and the Mac logo are trademarks of Apple Inc., registered in the U.S. and other countries. Other brand names mentioned herein are for identification purposes only and may be trademarks of their respective holder(s). Information is subject to change without notice. All rights reserved.

*Free basic installation support provided for 90 days from date of purchase. Advanced product features and configurations are not included in free basic installation support; optional premium support available.